



Office Space for Lease Near PLU

Beautiful office space with high quality finishes throughout. Plenty of natural light as well as modern lighting. Quiet and peaceful workspace in the midst of a busy college town. Parking is ample in the lighted lot or on Garfield Street. SR-512 is just minutes away. Asking lease rate is \$18/sf/yr plus NNN.

Property Overview

- Second floor office of 2405sf
- Two restrooms
- Three private offices
- Large conference or class room
- Additional open space
- Two stairway entrances
- Ample parking
- Easy access to Hwy 3 and SR-512
- Space Available: 2,405 SF
- Lease Rate: \$18.00/sf/yr NNN

DISCLAIMER: The above information has been secured from sources believed to be reliable, however, no representations are made to its accuracy. Prospective tenants or buyers should consult their professional advisors and conduct their own independent investigation. Properties are subject to change in price and/or availability without notice.





EXTERIOR PHOTOS



INTERIOR PHOTOS



Timothy Johnson

timothy@johnson-commercial.com
O: (253) 589-9999 C: (253) 209-9999

Margot Johnson

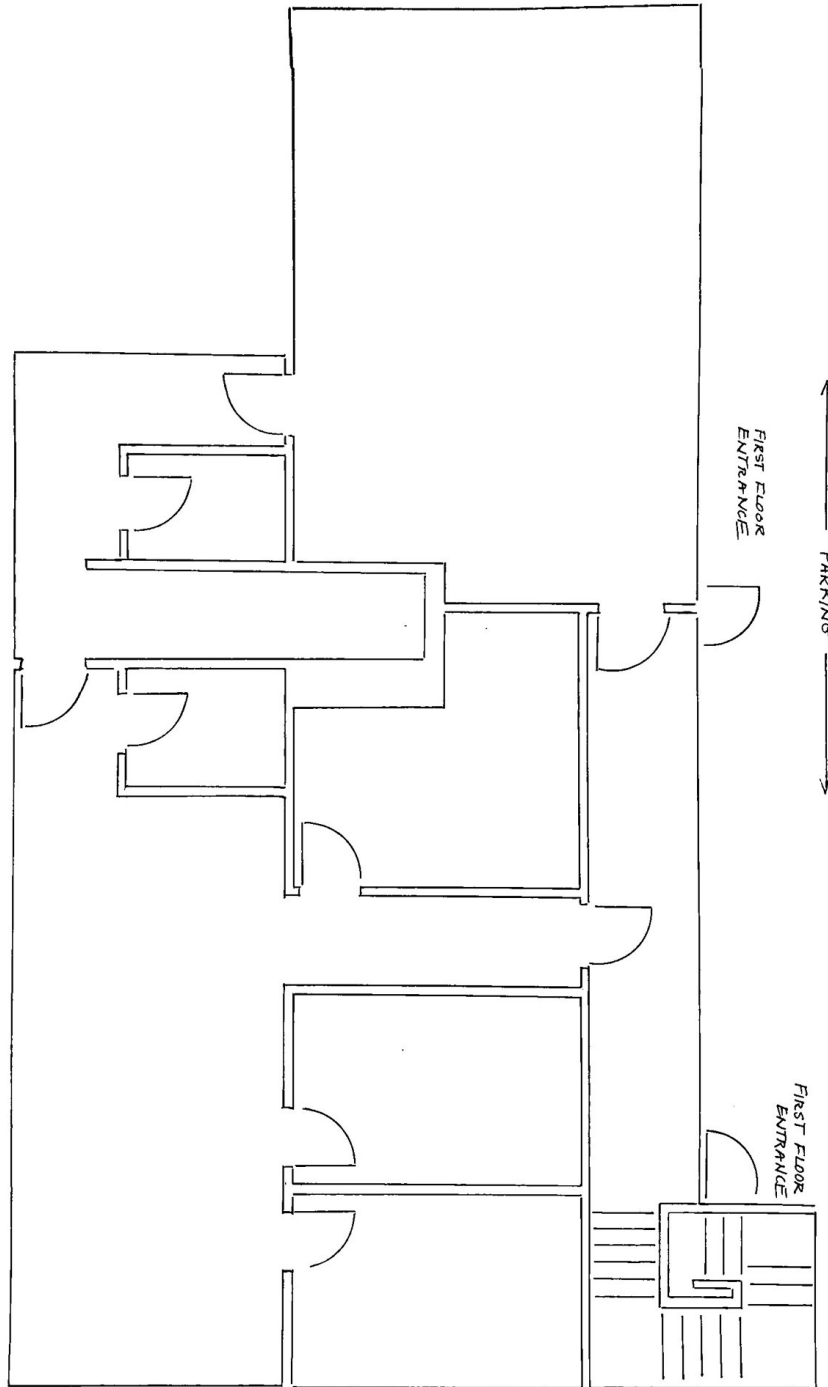
margot@johnson-commercial.com
O: (253) 589-9999 C: (253) 209-9998

Andrea Anderson

andrea@johnson-commercial.com
O: (253) 589-9999 C: (253) 444-7801



FLOOR PLAN



Timothy Johnson

timothy@johnson-commercial.com
O: (253) 589-9999 C: (253) 209-9999

Margot Johnson

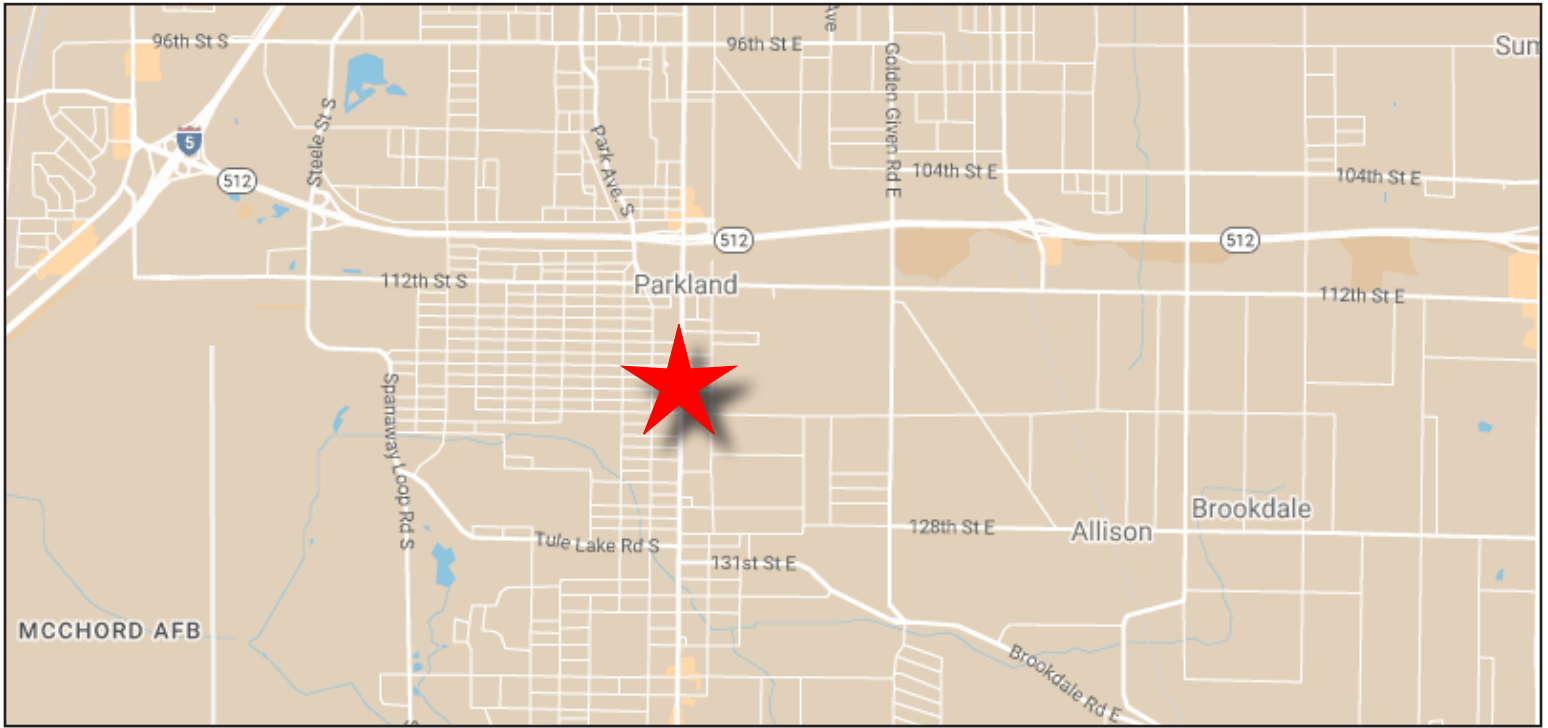
margot@johnson-commercial.com
O: (253) 589-9999 C: (253) 209-9998

Andrea Anderson

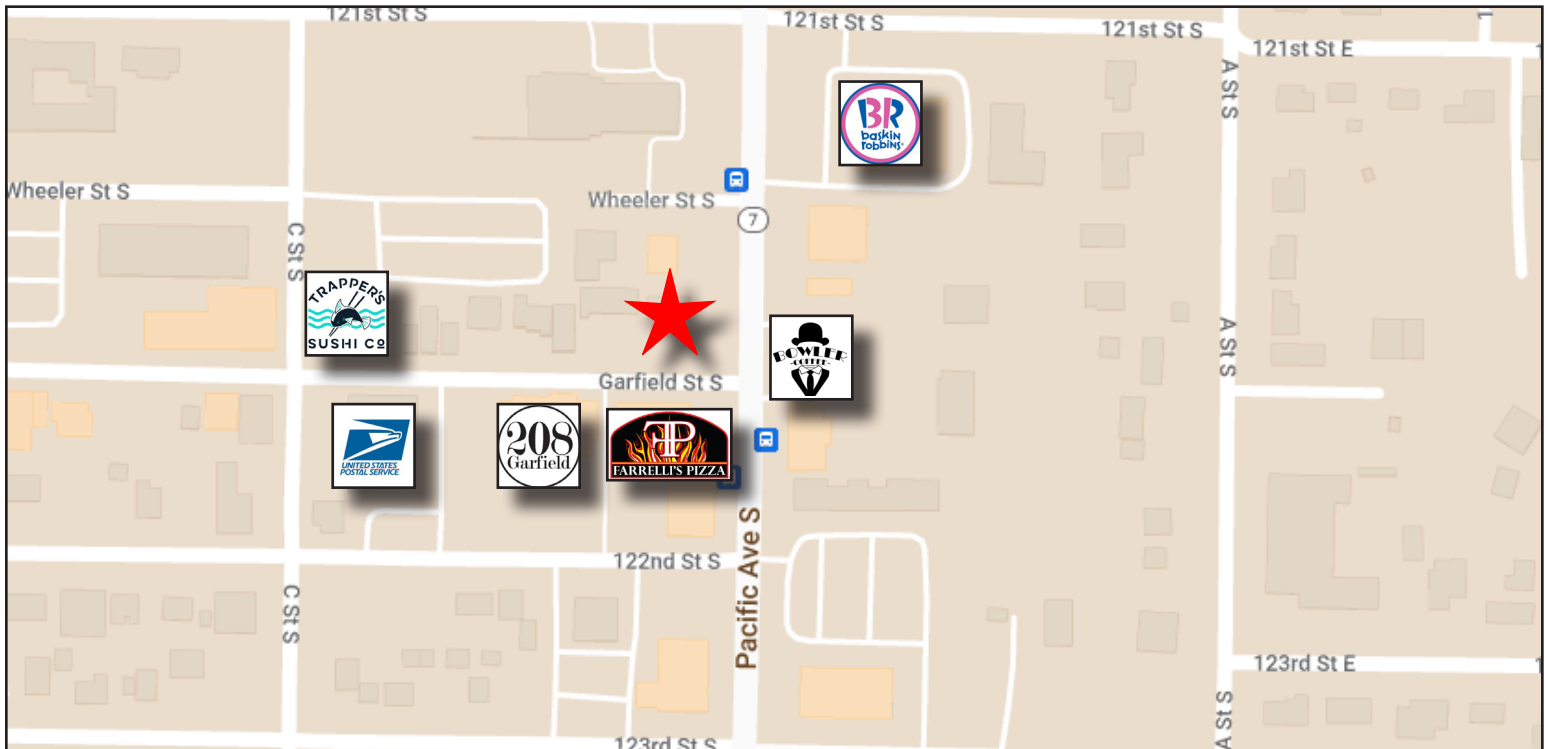
andrea@johnson-commercial.com
O: (253) 589-9999 C: (253) 444-7801



AREA MAP



NEIGHBORHOOD MAP



Timothy Johnson

timothy@johnson-commercial.com
O: (253) 589-9999 C: (253) 209-9999

Margot Johnson

margot@johnson-commercial.com
O: (253) 589-9999 C: (253) 209-9998

Andrea Anderson

andrea@johnson-commercial.com
O: (253) 589-9999 C: (253) 444-7801