



Perry Avenue Professional Building

3036 Perry Ave, Bremerton, WA 98310

Offered for lease is Suite A, a former medical office of 2,409sf with an additional 614sf on an upper floor. The medical office features a spacious waiting room with plenty of natural light, receptionist's office, four exam rooms, a lab, small darkroom, sterile room, two restrooms, and a business office. The upper floor has a lab, a private office, a large file storage area, and a restroom.

Also for lease is Suite C, a former dental office of 2,524sf. The dental office layout includes a waiting room, receptionist's office, patient restroom, four operatories, lab, staff lounge, private office and a staff restroom. Floor plan attached.

Property Overview

- Suite A: 2,409sf plus additional 614sf on upper floor
- Suite C: 2,524sf
- Ample parking in paved lot - +/- 28 stalls
- Building entrances are at either end of the building
- Signage on Perry Avenue
- \$14-\$16/sf/yr
- Major utilities included in rent
- Low NNN of \$4.50/sf/yr

DISCLAIMER: The above information has been secured from sources believed to be reliable, however, no representations are made to its accuracy. Prospective tenants or buyers should consult their professional advisors and conduct their own independent investigation. Properties are subject to change in price and/or availability without notice.



11120 Gravelly Lake Dr SW Ste 2
Lakewood, Washington 98499
johnson-commercial.com

Andrea Anderson
andrea@johnson-commercial.com
(253) 444-7801



Medical Office Space Available

EXTERIOR PHOTOS



SUITE A INTERIOR PHOTOS



11120 Gravelly Lake Dr SW Ste 2
Lakewood, Washington 98499
johnson-commercial.com

Andrea Anderson
andrea@johnson-commercial.com
(253) 444-7801



Medical Office Space Available

COMMON AREA PHOTOS



SUITE C INTERIOR PHOTOS

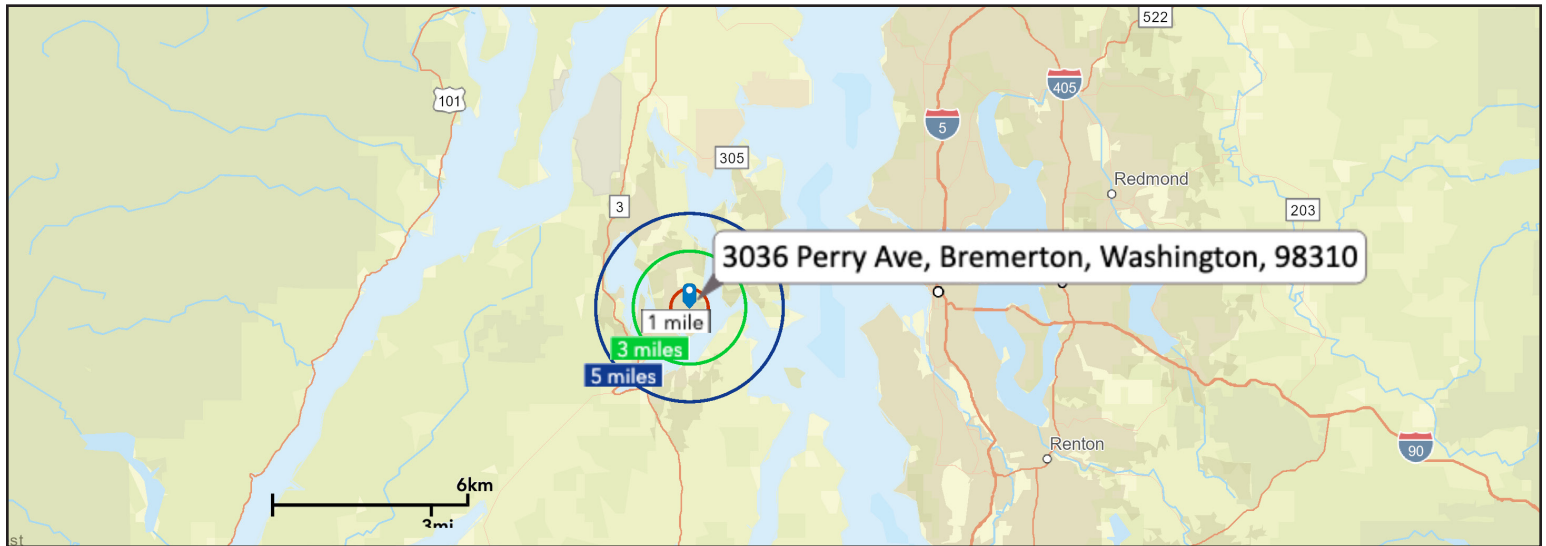




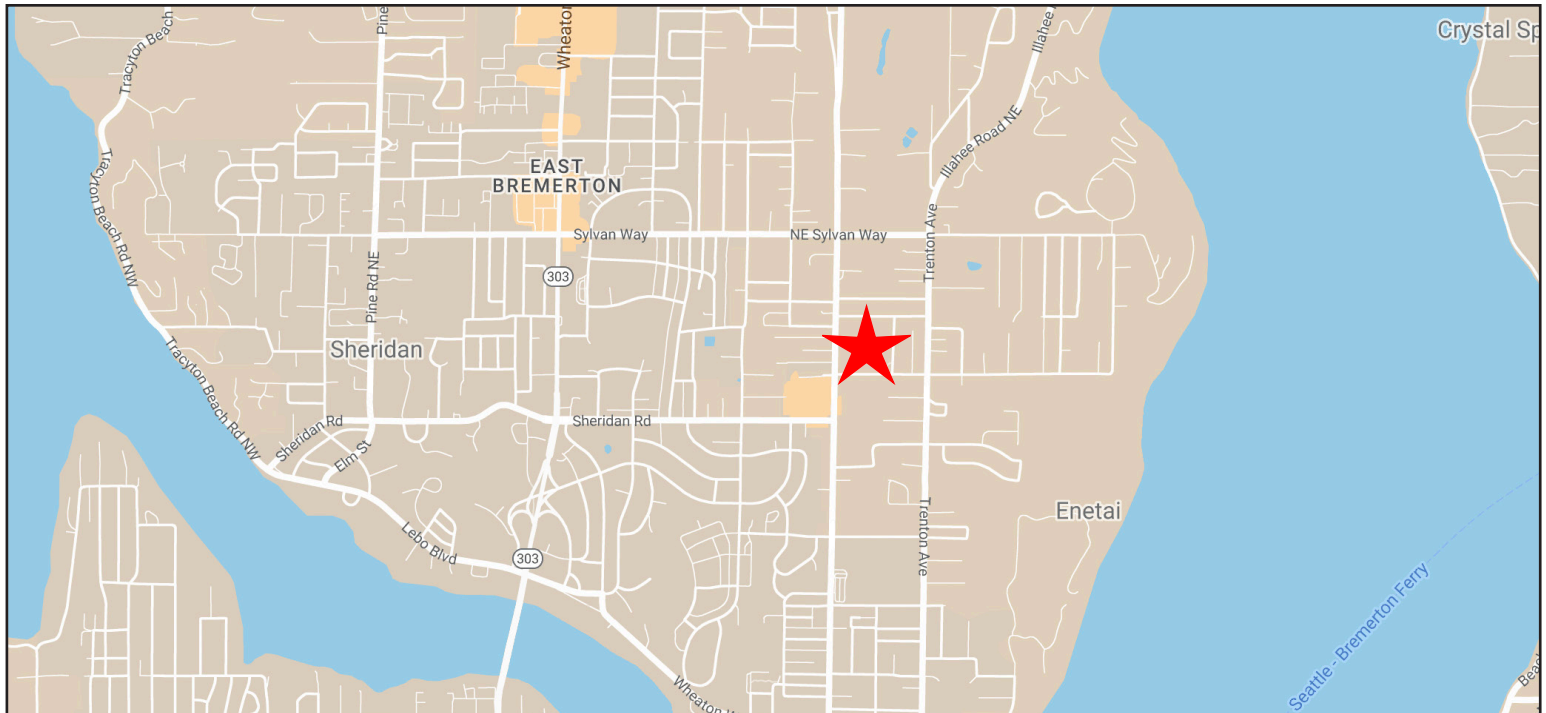
Medical Office Space Available

DEMOGRAPHICS

2021 Population	1 Mile	3 Miles	5 Miles
	10,828	60,634	118,607
2021 Household Income	1 Mile	3 Miles	5 Miles
	\$58,833	\$63,945	\$69,955



REGIONAL MAP



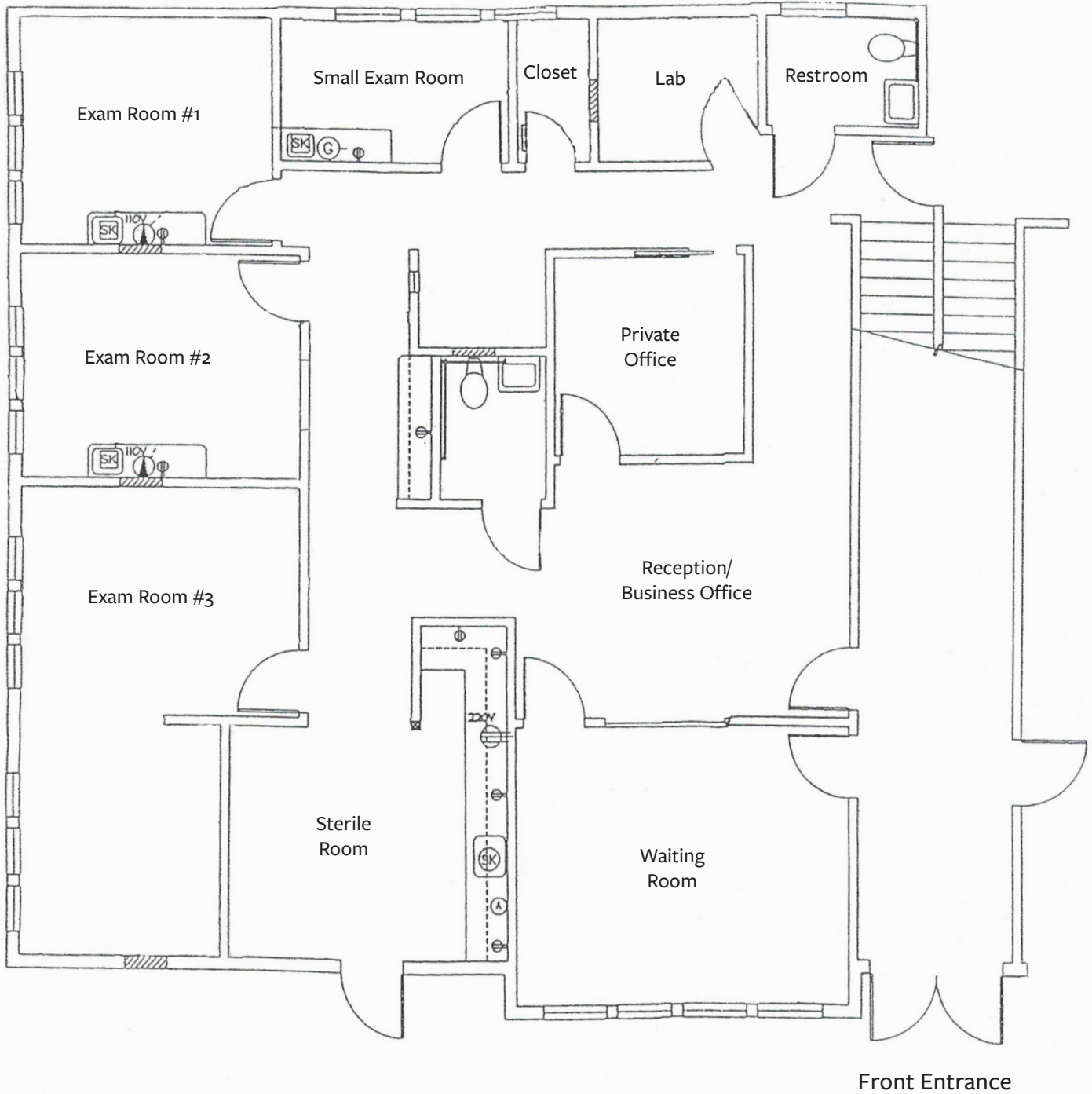
11120 Gravelly Lake Dr SW Ste 2
Lakewood, Washington 98499
johnson-commercial.com

Andrea Anderson
andrea@johnson-commercial.com
(253) 444-7801



Medical Office Space Available

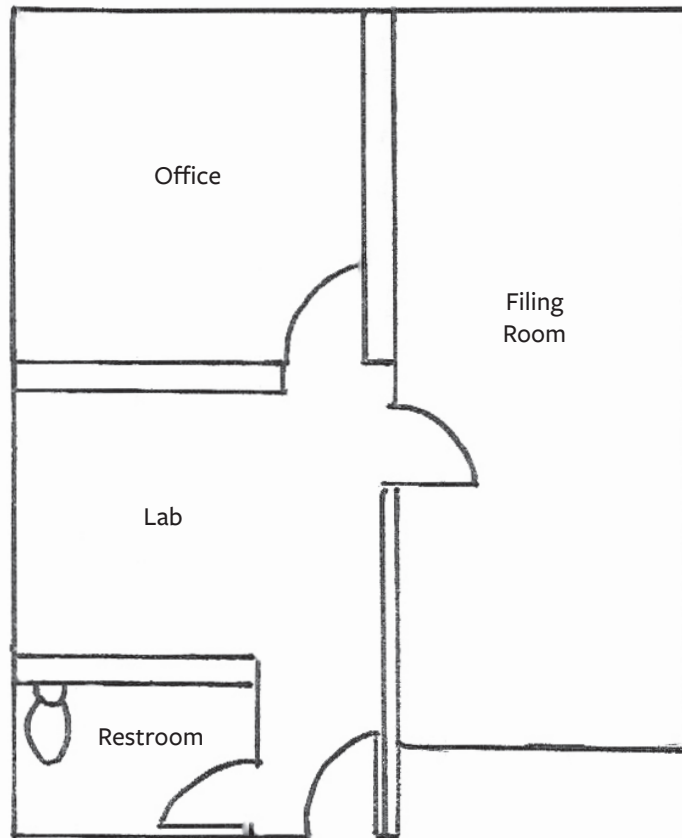
Suite A Floor Plan - Main Level





Medical Office Space Available

Suite A Floor Plan - Upper Level





Medical Office Space Available

Suite C Floor Plan - Lower Level

