



East Meridian Square

10312 120th St., Puyallup, WA

Available for lease is an end cap space of 750sf with storefront windows on two sides. Suite 10 offers an open floor plan with a restroom. There is ample parking all around the shopping center, and an opportunity for signage on the building. Join the great tenant mix at East Meridian Square – Sari Sari Store, Find Your Fitness, Massage Works, Cache Hair Salon, PH Water on the Go and more!

Property Overview

- Ample Lighted Parking
- Signalized intersection from East Meridian
- Available Space: 780 SF
- Lease Rate: \$16.00/sf/yr plus NNN
- NNN Estimate: \$6.28/sf/yr

DISCLAIMER: The above information has been secured from sources believed to be reliable, however, no representations are made to its accuracy. Prospective tenants or buyers should consult their professional advisors and conduct their own independent investigation. Properties are subject to change in price and/or availability without notice.



11120 Gravelly Lake Dr SW Ste 2
Lakewood, Washington 98499
johnson-commercial.com

Andrea Anderson
andrea@johnson-commercial.com
(253)444-7801

Margot Johnson
margot@johnson-commercial.com
(253) 209-9998



PUYALLUP RETAIL SPACE AVAILABLE

EXTERIOR PHOTOS - SUITE 8



INTERIOR PHOTOS - SUITE 10



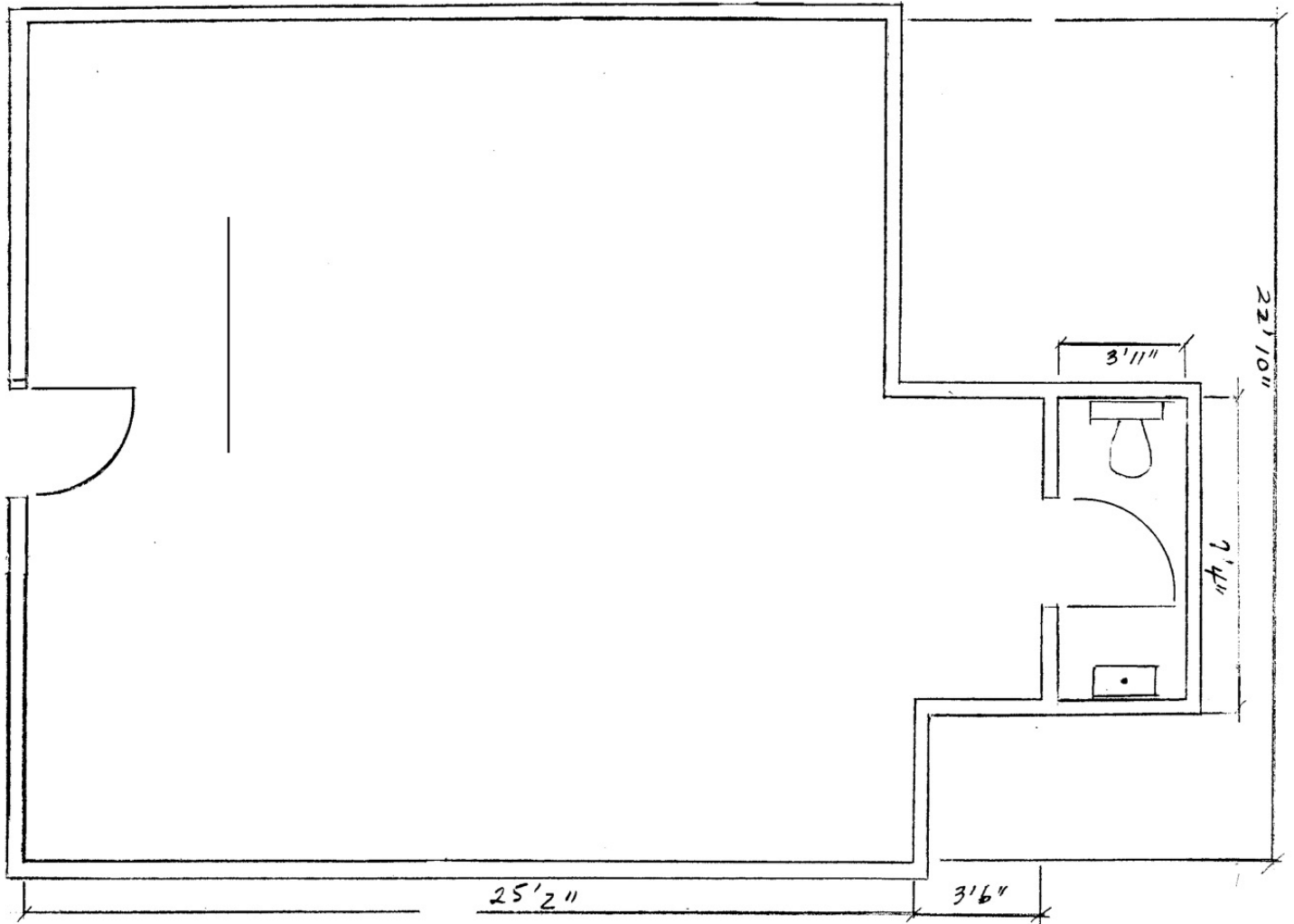
11120 Gravelly Lake Dr SW Ste 2
Lakewood, Washington 98499
johnson-commercial.com

Andrea Anderson
andrea@johnson-commercial.com
(253)444-7801

Margot Johnson
margot@johnson-commercial.com
(253) 209-9998



FLOOR PLAN SKETCH - SUITE 10



EAST MERIDIAN SQUARE · 10312 120th ST. E · PUYALLUP WA 98374
UNIT 10 · 750 SQ. FT.

