



Lakewood Square Shopping Center

Currently available is a 3,653ft² warehouse space in City of Lakewood Central Business District (CBD). Warehouse features one private office, 18' clear ceiling height, a second-floor mezzanine, a 12' roll-up door, and excellent monument signage. In January, the rest of the warehouse will be available, bringing the available space to 7,285ft². This commercial center is located in the heart of Lakewood, off busy Bridgeport Way Dr. and Gravelly Lake Dr. SW with traffic counts of 38,000 vehicles per day. The parking lot has been recently seal coated and striped and offers generous lighted parking. Easy access from both Mt. Tacoma Dr and Lake Grove St. Monument signage is available at each entrances.

Property Overview

- 12' roll-up door
- Man door
- Clear height approximately 18'
- Monument signage in front of building
- Ample, lighted parking
- Zoning: CBD
- Available now: 3,653ft²
- Total Available Jan. 1: 7,285ft²
- Lease rate: \$1.33/ft²/mo
- NNN estimate: \$0.30/ft²/mo

DISCLAIMER: The above information has been secured from sources believed to be reliable, however, no representations are made to its accuracy. Prospective tenants or buyers should consult their professional advisors and conduct their own independent investigation. Properties are subject to change in price and/or availability without notice.





EXTERIOR PHOTOS



INTERIOR PHOTOS



Timothy Johnson

timothy@johnson-commercial.com
O: (253) 589-9999 C: (253) 209-9999

Margot Johnson

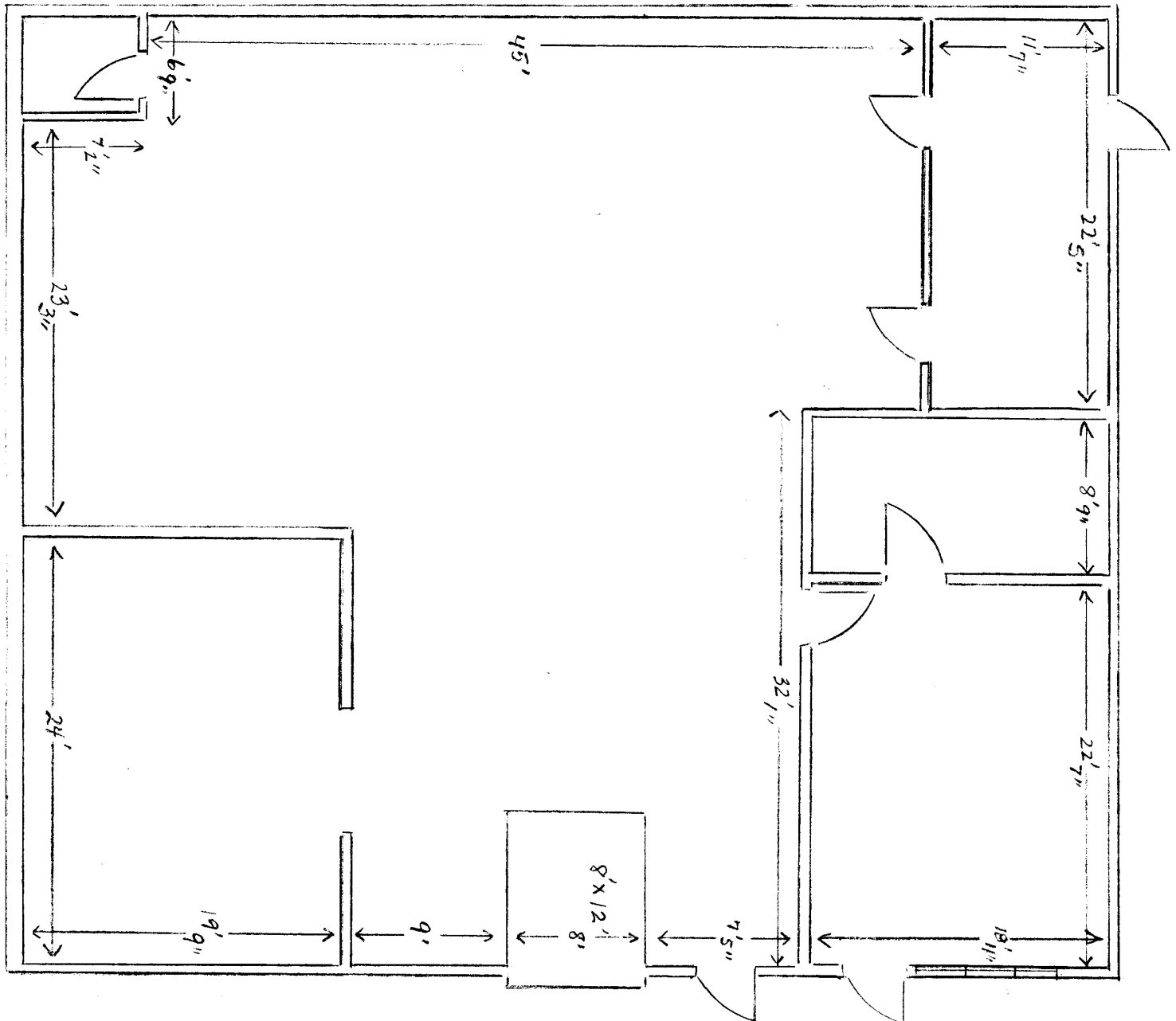
margot@johnson-commercial.com
O: (253) 589-9999 C: (253) 209-9998

Andrea Anderson

andrea@johnson-commercial.com
O: (253) 589-9999 C: (253) 444-7801



SPACE PLAN



Timothy Johnson

timothy@johnson-commercial.com
O: (253) 589-9999 C: (253) 209-9999

Margot Johnson

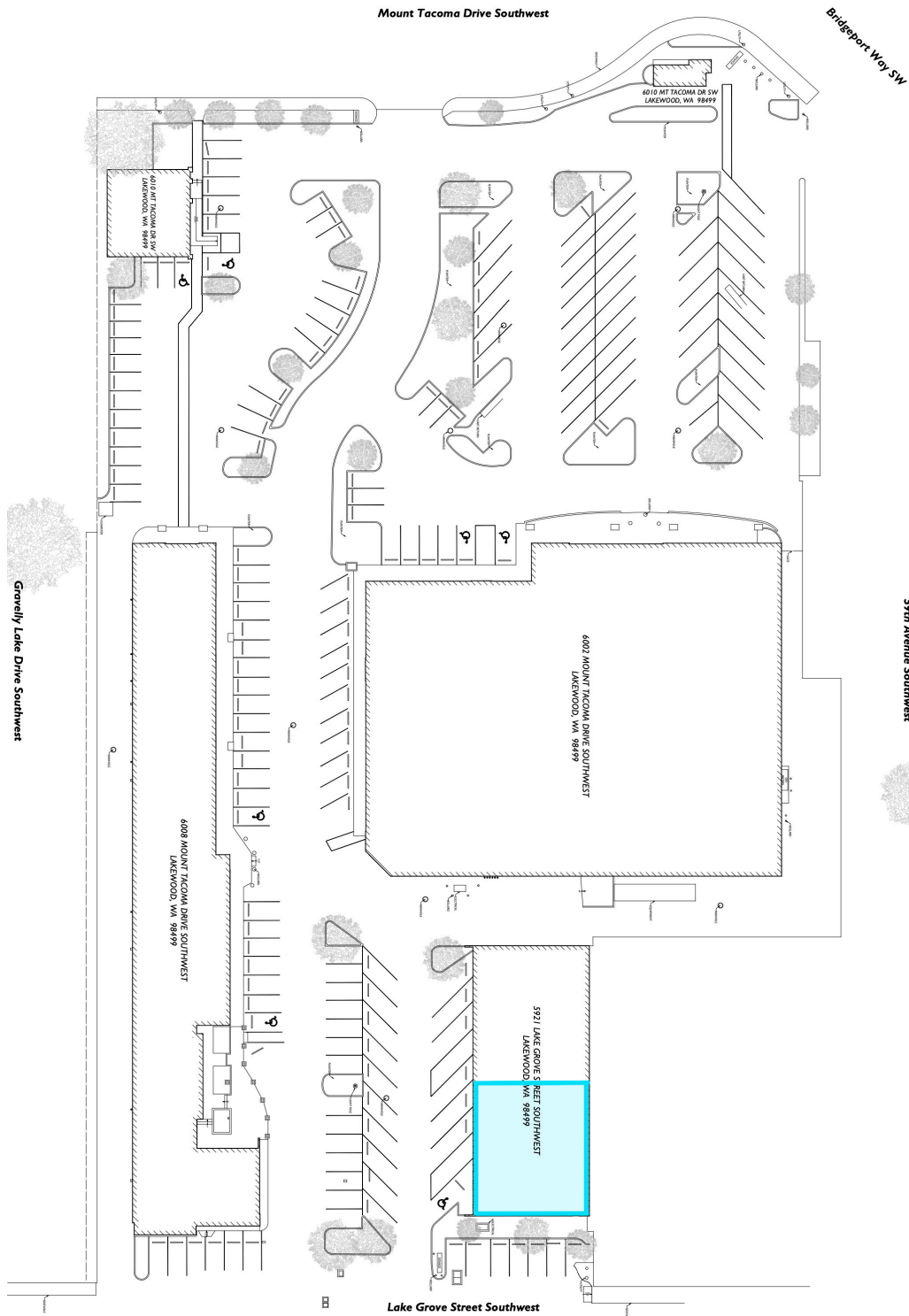
margot@johnson-commercial.com
O: (253) 589-9999 C: (253) 209-9998

Andrea Anderson

andrea@johnson-commercial.com
O: (253) 589-9999 C: (253) 444-7801



SITE PLAN



Timothy Johnson

timothy@johnson-commercial.com
O: (253) 589-9999 C: (253) 209-9999

Margot Johnson

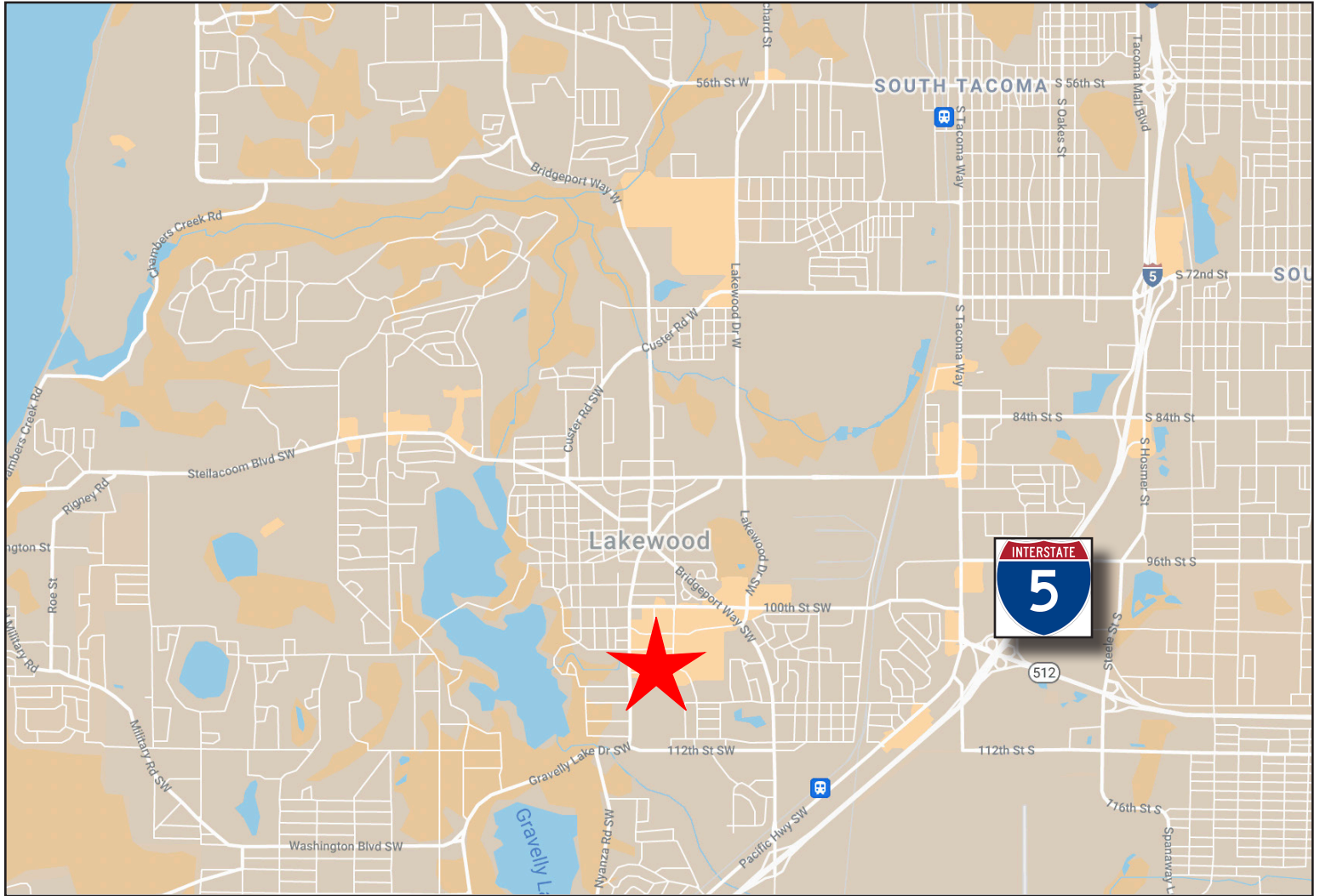
margot@johnson-commercial.com
O: (253) 589-9999 C: (253) 209-9998

Andrea Anderson

andrea@johnson-commercial.com
O: (253) 589-9999 C: (253) 444-7801



AREA MAP



DEMOGRAPHICS

2021 Population	1 Mile	3 Miles	5 Miles
	12,058	98,540	229,133
2021 Household Income	1 Mile	3 Miles	5 Miles
	\$51,085	\$58,041	\$60,254

Timothy Johnson

timothy@johnson-commercial.com
O: (253) 589-9999 C: (253) 209-9999

Margot Johnson

margot@johnson-commercial.com
O: (253) 589-9999 C: (253) 209-9999

Andrea Anderson

andrea@johnson-commercial.com
O: (253) 589-9999 C: (253) 444-7801