



Lundstrom Plaza

10209 Bridgeport Way SW, Lakewood, WA

Office space is now available on the first floor of Lundstrom Plaza, a stately office building with a large, atrium-like common area and elevator access to all floors. The building is located across from the Lakewood Towne Center, with signage on Bridgeport Way. Generous, lighted parking offers plenty of room for tenants and their clients. There are three available suites: B-1 of 750sf, C-10 of 782 sf, and D-1A of 275 sf.

Property Overview

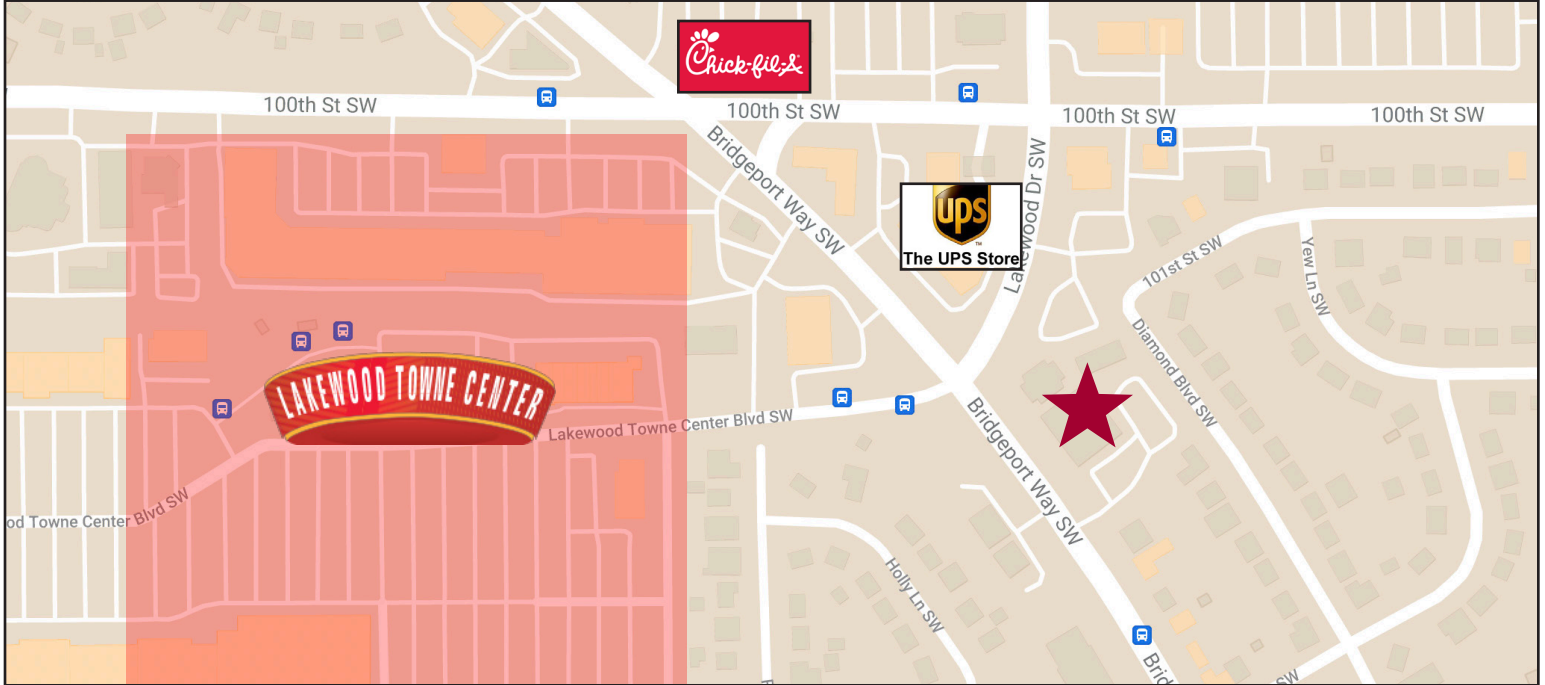
- 1st and 2nd floor spaces available
 - Excellent signage on Bridgeport Way
 - Ample parking
 - Lease Rate: \$24.00/sf/yr gross
 - Rent includes all major utilities
- Suites Available:
 - B-1 of 750 SF
 - C-10 of 782 SF
 - D-1A of 275 SF

DISCLAIMER: The above information has been secured from sources believed to be reliable, however, no representations are made to its accuracy. Prospective tenants or buyers should consult their professional advisors and conduct their own independent investigation. Properties are subject to change in price and/or availability without notice.



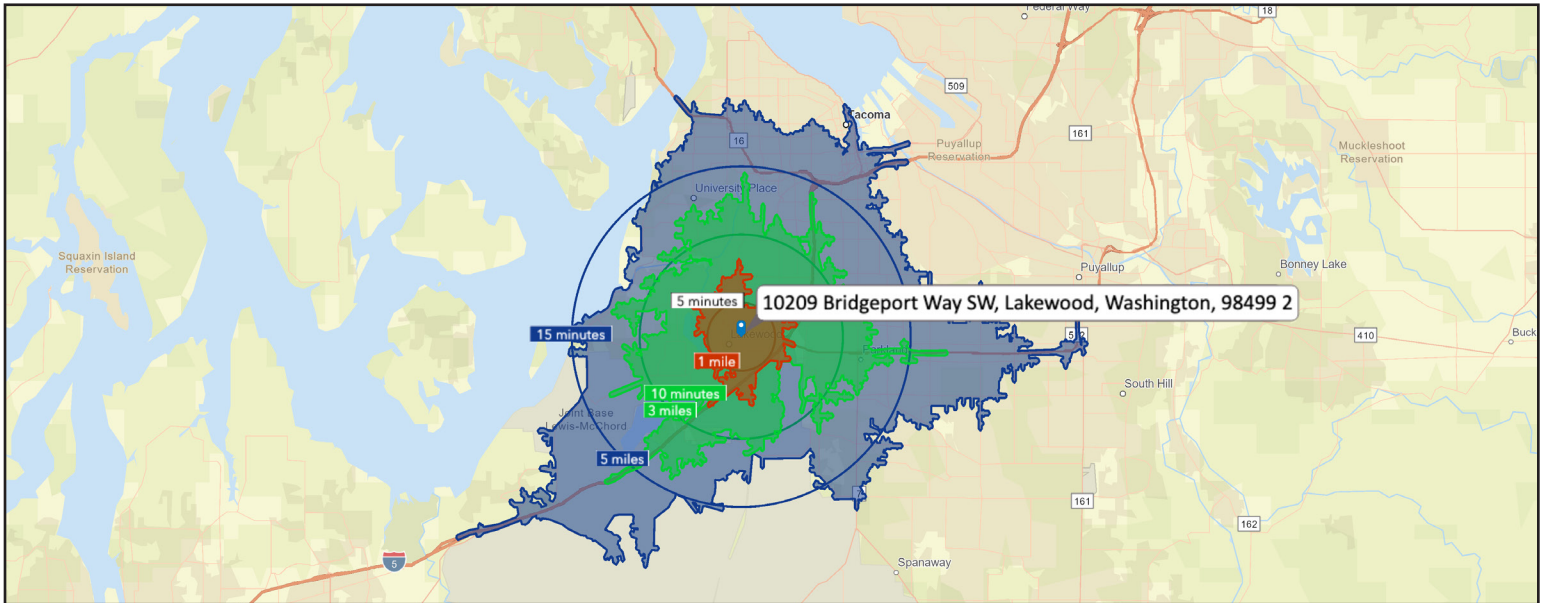


NEIGHBORHOOD MAP



DEMOGRAPHICS

2021 Population	1 Mile	3 Miles	5 Miles
	12,359	99,685	243,000
2021 Household Income	1 Mile	3 Miles	5 Miles
	\$53,901	\$61,643	\$67,091



1120 Gravelly Lake Dr SW Ste 2
Lakewood, Washington 98499
johnson-commercial.com

Timothy Johnson
timothy@johnson-commercial.com
(253) 209-9999

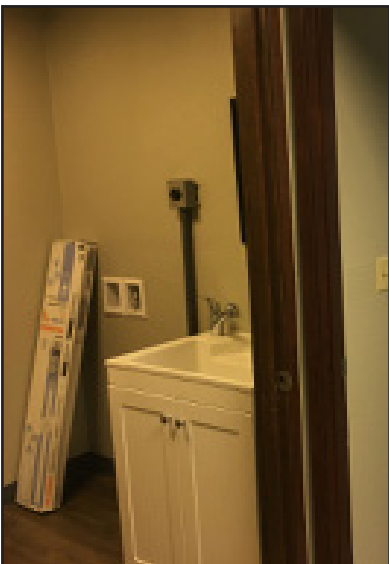
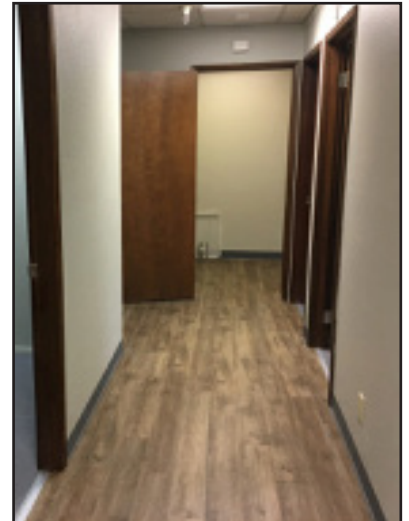


Office Space for Lease

EXTERIOR PHOTOS



INTERIOR PHOTOS





SUITE A-10 FLOOR PLAN

1,110sf

